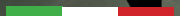


# Vintage



 **designer**  
stone solutions

MADE  
IN ITALY







Wall: Vintage #18 Green 200x200mm



# Vintage



**MAR10032**  
#7 Blu  
200x200mm



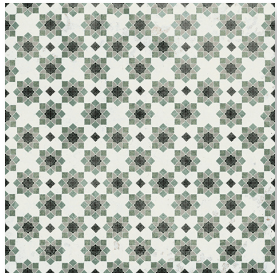
**MAR10021**  
#13 Stripe  
200x200mm



**MAR10035**  
#15 Green  
200x200mm



**MAR10036**  
#16 Green  
200x200mm



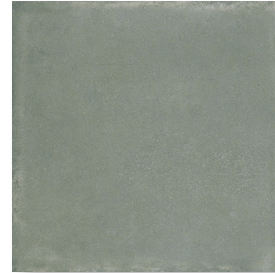
**MAR10037**  
#17 Green  
200x200mm



**MAR10038**  
#18 Green  
200x200mm



**MAR10039**  
#19 Green  
200x200mm



**MAR10040**  
#8 Nera Matt  
200x200mm

# Vintage

## SPECIFICATIONS

Material	Porcelain
Edge type	Cushion
Sizes	200x200mm
Thickness	9.5mm
Finish & Slip rating	Mat/R9
Variation Rating	V3
Made In	Italy
Applications	Wall, floor, internal, external covered

	pcs/box	m2/box	kg/box	box/pallet	m2/pallet	kg/pallet
200 x 200mm	26	1.04	20.9	64	66.56	1336







Floor: #15 Green 200x200mm



Wall: #7 Blu 200x200mm





Melbourne Head Office

2 / 1 Kitchen Road, Dandenong South VIC 3175

[www.designerstonesolutions.com.au](http://www.designerstonesolutions.com.au)

[sales@designerstonesolutions.com.au](mailto:sales@designerstonesolutions.com.au)

03 9706 5245

Disclaimer: Slip ratings, tile colours, shades and sizing can vary between productions and we recommend confirmation at the time of specifying and ensuring the products are dry laid before being fixed.. Colours depicted in this catalogue may vary to the actual tile. We are not responsible for typographical errors and we make every effort to ensure the accuracy of the information published in our catalogues and websites. The information stated in this catalogue is subject to change at any time without notice.