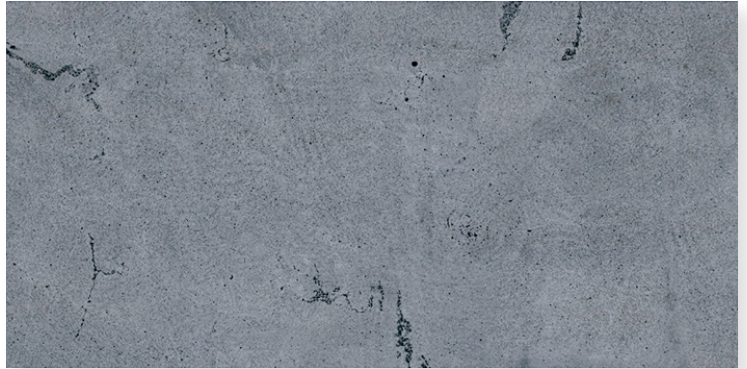
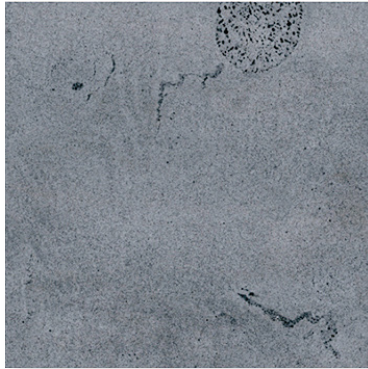


BLUESTONE



designer
stone solutions

BLUESTONE



10mm Thickness Range

OLI0002

Matt R10
300x600x10mm

OLI0003

Matt R10
600x600x10mm

OLI0001

Matt R10
600x1200x10mm

OLI0006

External R11
300x600x10mm

OLI0007

External R11
300x600x10mm

20mm Thickness Range

20MM004

External R11
300x600x20mm

20MM001

External R11
600x600x20mm

20MM003

External R11
600x1200x20mm

Material:	Porcelain
Edge Type:	Rectified
Sizes:	300x600mm (16 faces) 600x600mm (8 faces) 600x1200mm (6 faces)
Finish & Slip Rating:	Matt R10 External R11
Variation rating:	V2
Thickness:	10mm & 20mm
Applications:	External Wall, Floor & Commercial
Made in:	China



designer
stone solutions

Melbourne Head Office
2 / 1 Kitchen Road, Dandenong South VIC 3175
www.designerstonesolutions.com.au
sales@designerstonesolutions.com.au
03 9706 5245

Disclaimer: Slip ratings and tile colours/shades can vary between productions and we recommend confirmation at the time of specifying. Colours depicted in this catalogue may vary to the actual tile. We are not responsible for typographical errors and we make every effort to ensure the accuracy of the information published in our catalogues and websites. The information stated in this catalogue is subject to change at any time without notice.