

# Q-STONE



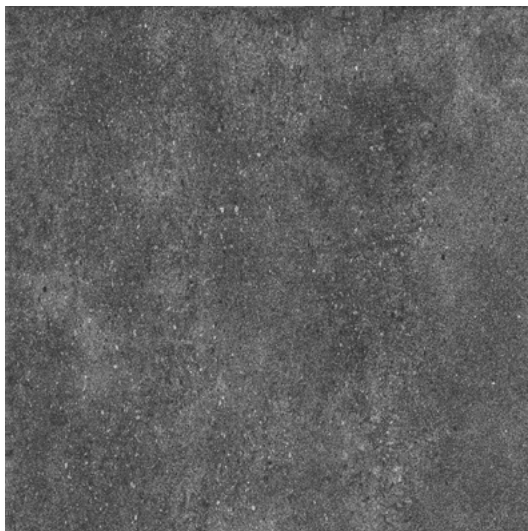


Floor: Q-Stone Bianco



Floor: Q-Stone Black

# Q-STONE



## **DAM0007**

Q-Stone Black External R11 600x600mm



## **DAM0028**

Q-Stone Black External Pavers R11 600x600x20mm



## **DAM0008**

Q-Stone Bianco External R11 300x600mm



## **DAM0009** - *LOW STOCK, DISCONTINUED*

Q-Stone Grigio External R11 300x600mm



## **DAM0010**

Q-Stone Black External R11 300x600mm



# Q-STONE

Material:	Porcelain
Edge Type:	Rectified
Size & Thickness:	300x600x10mm 600x600x10mm 600x600x20mm
Finish:	External R11
Faces:	300x600mm: 16 Faces 600x600mm: 8 Faces
Applications:	External, Commercial
Made in:	China

	pcs/box	m2/box	kg/box	box/pallet	m2/pallet	kg/pallet
300x600x10	8	1.44	31.5	40	57.60	1260
600x600x10	4	1.44	31.5	36	51.84	1134
600x600x20	2	0.72	34	40	28.80	1360





**designer**  
stone solutions

**Melbourne Head Office**

2 / 1 Kitchen Road, Dandenong South VIC 3175

[www.designerstonesolutions.com.au](http://www.designerstonesolutions.com.au)

[sales@designerstonesolutions.com.au](mailto:sales@designerstonesolutions.com.au)

03 9706 5245

Disclaimer: Slip ratings and tile colours/shades can vary between productions and we recommend confirmation at the time of specifying. Colours depicted in this catalogue may vary to the actual tile. We are not responsible for typographical errors and we make every effort to ensure the accuracy of the information published in our catalogues and websites. The information stated in this catalogue is subject to change at any time without notice.